

31 October 2018

CASTLE TRUST DIRECT PLC

Issue of £5,000,000 Fortress Bond (Issue 387) 2 Year (Income) November 2018 ISA Notes

Offered by CASTLE TRUST CAPITAL PLC

Under the Castle Trust Direct Programme for the Issuance of Notes

**PART A – CONTRACTUAL TERMS**

Terms used herein shall be deemed to be defined as such for the purposes of the Terms and Conditions (the “**Conditions**”) of the Notes set forth in the Base Prospectus dated 12 June 2018 which, together with the Supplemental Prospectuses dated 2 July 2018 and 4 July 2018, constitutes a base prospectus for the purposes of the Prospectus Directive (Directive 2003/71/EC) (and amendments thereto, including Directive 2010/73/EU) (the “**Prospectus Directive**”). This document constitutes the Final Terms of the Notes described herein for the purposes of Article 5.4 of the Prospectus Directive and must be read in conjunction with the Base Prospectus.

Full information on the Issuer and the offer of the Notes is only available on the basis of the combination of the Base Prospectus and these Final Terms. The Base Prospectus is available for viewing at and copies may be obtained during normal working hours from the Issuer’s registered office at 10 Norwich Street, London EC4A 1BD. For the purposes of Article 14 of the Prospectus Directive, the Base Prospectus and the Final Terms have been published on the Castle Trust Capital plc website: <https://www.castletrust.co.uk/documents-investments>. A summary of the individual issue is annexed to these Final Terms.

1	Issuer:	Castle Trust Direct plc
2	Series Number:	387
3	Aggregate Nominal Amount of Series:	£5,000,000
4	Issue Price:	100% of the Aggregate Nominal Amount.
5	(a) Issue Date:	31 October 2018
	(b) Interest Commencement Date:	1 December 2018
	(c) Calculation Amount:	£1,000
6	Maturity Date:	1 December 2020 (subject to any extension)
7	Interest Basis:	2.2342% Fixed Rate (as such rate may be: (i) increased by the Issuer (if at all and at its absolute discretion) during the Offer Period and notified to Noteholders prior to the end of such period); and (ii) amended (as part of any extension) to the rate notified by the Issuer to the Noteholder prior to the Election Period).
8	Redemption/Payment Basis:	Subject to any early redemption, the Notes will be redeemed on the Maturity Date at 100% of their nominal amount.

9	Change of Interest Basis or Redemption/Payment Basis:	Not Applicable
10	Put/Call Options:	Issuer Call
11	Date Board approval for issuance of Notes obtained:	17 October 2018

#### PROVISIONS RELATING TO INTEREST (IF ANY) PAYABLE

12	Fixed Rate Note Provisions	Applicable
	(a) Rate(s) of Interest:	2.2342% per annum payable quarterly (as such rate may be: (i) increased by the Issuer (if at all and at its absolute discretion) during the Offer Period and notified to Noteholders prior to the end of such period); and (ii) amended (as part of any extension) to the rate notified by the Issuer to the Noteholders prior to the Election Period) in arrear
	(b) Interest Payment Date(s):	Last calendar day of February, May, August and November in each year up to and including the Maturity Date
	(c) Fixed Coupon Amount(s):	£5.5933 per Calculation Amount (as such amount may be: (i) increased to reflect an increase to the Rate of Interest by the Issuer (if at all and at its discretion) during the Offer Period and notified to Noteholders prior to the end of such period); and (ii) amended (as part of any extension) to the amount notified by the Issuer to the Noteholders prior to the Election Period)
	(d) Broken Amount(s):	Not Applicable
	(e) Determination Date(s):	Not Applicable
	(f) Day Count Fraction:	Actual/365 Fixed
	(g) Other terms relating to the method of calculating interest for the Notes:	None
13	Floating Rate Note Provisions:	Not Applicable

#### PROVISIONS RELATING TO REDEMPTION

14	Issuer Call: <i>(Applicable only for Notes held by Castle Trust Capital plc)</i>	Applicable
----	---	------------

Optional Redemption Condition 6.2 (Redemption at option of the Issuer (Issuer Call)) of the Notes applies  
Amount and method, if any, of calculation of such amount(s):

- |    |   |                 |
|----|---|-----------------|
| 15 | Investor Put:                                 | Not Applicable  |
| 16 | Extension of Maturity Date, Extension Option: | Applicable      |
| 17 | Final Redemption Amount:                      | 100 per cent.   |
| 18 | Final Repayment Date:                         | 4 December 2020 |

### LISTING AND ADMISSION TO TRADING APPLICATION

These Final Terms comprise the final terms required to list and have admitted to trading the issue of Notes described herein pursuant to the £1,500,000,000 Castle Trust Direct Programme

### THIRD PARTY INFORMATION

None

Signed on behalf of Castle Trust Direct plc

By:   
.....  
Duly authorised

By: \_\_\_\_\_  
.....  
Duly authorised

## PART B – OTHER INFORMATION

### 1 ADMISSION TO TRADING

Application has been made by the Issuer (or on its behalf) for the Notes to be admitted to the Official List of the Irish Stock Exchange and to trading on its regulated market. It is expected that the first dealing day will be 31 October 2018.

### 2 INTERESTS OF NATURAL AND LEGAL PERSONS INVOLVED IN THE ISSUE/OFFER

Save as discussed in the section headed "Subscription and Sale" of the Base Prospectus, so far as the Issuer is aware, no person involved in the issue of the Notes has an interest material to the offer.

### RELATIONSHIPS MATERIAL TO THE ISSUE/OFFER BETWEEN THE ISSUER AND THE BORROWER

The Issuer will make a new Advance under the Borrower Loan Agreement in respect of the Offer Series on 7 December 2018.

### 3 REASONS FOR THE OFFER, ESTIMATED NET PROCEEDS AND TOTAL EXPENSES

- |                               |                                     |
|-------------------------------|-------------------------------------|
| (a) Reasons for the offer:    | See Part XII of the Base Prospectus |
| (b) Estimated net proceeds:   | £5,000,000 minus expenses           |
| (c) Estimated total expenses: | £450                                |

### 4 YIELD (*Fixed Rate Notes only*)

Indication of yield:	2.15% Calculated on the Issue Date
----------------------	---------------------------------------

The yield is calculated at the Issue Date on the basis of the Issue Price. It is not an indication of future yield.

### 5 OPERATIONAL INFORMATION

- |  |   |
|--|---|
| (a) ISIN Code:   | GB00BFKMB635  |
| (b) Other Final Terms:   | None  |
| (c) Offer Period:  | 31 October 2018 – 30 November 2018  |
| (d) Any other clear and objective conditions attached to the consent which are relevant for the use of the Base Prospectus:  | Not applicable  |
| (e) Names and address of the entities which have a firm commitment to act as intermediaries in secondary trading, providing liquidity through bid and offer rates and description of the main terms of their commitment: | Castle Trust Capital plc, 10 Norwich Street, London EC4A 1BD. See Parts X and XIX of the Base Prospectus. |

## ANNEX – ISSUE SPECIFIC SUMMARY

### SUMMARY

Section A – Introduction and warnings		
A.1	<b>Introduction</b>	<p>This summary should be read as an introduction to this Base Prospectus. Any decision to invest in Notes should be based on consideration of the Base Prospectus as a whole by the investor. Where a claim relating to the information contained in the Base Prospectus is brought before a court, the plaintiff investor might, under the national legislation of the Member States, have to bear the costs of translating the Base Prospectus before the legal proceedings are initiated. Civil liability attaches only to those persons who have tabled the summary including any translation thereof, but only if the Summary is misleading, inaccurate or inconsistent when read together with the other parts of the Base Prospectus or it does not provide, when read together with the other parts of the Base Prospectus, key information in order to aid investors when considering whether to invest in the Notes.</p>
A.2	<b>Use of the Base Prospectus</b>	<p>The Issuer has provided its consent to the use of the Base Prospectus and Final Terms for subsequent resale or final placement of notes (the “Notes”) (a “Public Offer”) by:</p> <ol style="list-style-type: none"> <li>1. all financial intermediaries who fulfil the following conditions: <ol style="list-style-type: none"> <li>(i) an entity (an “Authorized Offeror”) which: <ol style="list-style-type: none"> <li>(a) is authorised to offer securities to the public or distribute Notes under FSMA in the UK (or under the relevant legislation implementing MiFID II in Europe) (“Financial Intermediaries”) for the subsequent resale or final placement of the Notes in the United Kingdom; and</li> <li>(b) considers the relevant manufacturer's target market assessment and distribution channels identified under the “MiFID II product governance” legend set out in this Prospectus; or</li> </ol> </li> <li>(ii) an Authorized Offeror that is expressly named in the list of Authorized Offerors on the Issuer's website (<a href="https://www.castletrust.co.uk/important-information#authorised-offerors">https://www.castletrust.co.uk/important-information#authorised-offerors</a>); and</li> </ol> </li> <li>2. Castle Trust Capital plc (“Castle Trust”) and Castle Trust Capital Management Limited (“CTCM”).</li> </ol> <p>Valid offers of Notes may only be made by an Authorized Offeror in the context of a Public Offer if the Offer is:</p> <ol style="list-style-type: none"> <li>(i) made in respect of the Series of Note specified in the Final Terms;</li> <li>(ii) made in the United Kingdom; and</li> <li>(iii) made during the offer period specified in the Final Terms (the “Offer Period”).</li> </ol> <p>The Issuer has also provided its consent to the distribution of Notes pursuant to the £1,500,000,000 Castle Trust Direct Programme for the issuance of Notes (the “Programme”) in the United Kingdom. The offer period within which the Issuer consents to the later resale or final placement by Financial Intermediaries or by Castle Trust or CTCM is from 12 June 2018 to 11 June 2019.</p> <p>The offer of Notes by Financial Intermediaries or by Castle Trust or CTCM must be made pursuant to the terms and conditions of the Notes (the “Note Conditions”). <b>If an offer is being made by a Financial Intermediary or by Castle Trust or CTCM, such Financial Intermediary or Castle Trust or CTCM will inform Investors of the terms and conditions of the offer at the time the offer is made.</b></p>

<b>Section B – Issuer and Castle Trust Capital plc</b>																												
<b>B.1</b>	<b>Legal and commercial Name</b>	Castle Trust Direct plc (the “ <b>Issuer</b> ”); Castle Trust Capital plc (“ <b>Castle Trust</b> ”); Castle Trust Finance Limited (“ <b>CTF</b> ”); and Castle Trust Treasury Limited (“ <b>CTT</b> ”)																										
<b>B.2</b>	<b>Domicile; legal form; legislation; country of incorporation</b>	The Issuer was incorporated in England and Wales as a public limited company under the Companies Act 2006 on 19 May 2014 under the name of Castle Trust Direct plc with registered number 9046984.  Castle Trust was incorporated in England and Wales as a private limited company on 29 November 2010 and was converted to a public limited company on 24 November 2011, under the Companies Act 2006 under the name of Castle Trust Capital plc with registered number 07454474.  CTF was incorporated in England and Wales as a private limited company under the Companies Act 2006 on 18 May 2015 under the name Castle Trust Finance Limited with registered number 09596607.  CTT was incorporated in England and Wales as a private limited company under the Companies Act 2006 on 31 October 2016 under the name Castle Trust Treasury Limited with registration number 10452649.																										
<b>B.5</b>	<b>Description of the group and Castle Trust’s, CTF’s and CTT’s position within the group</b>	Castle Trust is a wholly-owned subsidiary of Castle Trust Holdings (Jersey) Limited (“ <b>CTHJ</b> ”), which in turn is majority owned by J.C. Flowers Fund III, a subsidiary of the J.C. Flowers group. Castle Trust’s subsidiaries include: CTCM, the Issuer, CTF, CTT, Castle Trust POS Limited (“ <b>CTPOS</b> ”) and, Omni Capital Retail Finance Limited (“ <b>OCRF</b> ”) (together with Castle Trust’s other subsidiaries, the “ <b>Group</b> ”).																										
<b>B.9</b>	<b>Profit forecast or estimate for Castle Trust, CTF and CTT</b>	Not applicable; no profit forecast or estimate has been published.																										
<b>B.10</b>	<b>Qualifications in independent accountant’s report on historical financial information of Castle Trust, CTF and CTT</b>	Not applicable; there are no qualifications in any audit report or any independent accountant’s report on the historical financial information of Castle Trust, CTF or CTT.																										
<b>B.12</b>	<b>Selected key financial information on Castle Trust, CTF and CTT; no material adverse change statement and no significant change statement</b>	<p>The table below sets out summary key information extracted from the audited consolidated financial statements of Castle Trust for the period 1 October 2015 to 30 September 2016:</p> <table border="1" style="width: 100%; border-collapse: collapse;"> <thead> <tr> <th style="text-align: left;"><b>Assets</b></th> <th style="text-align: right;"><b>30 September 2016</b></th> </tr> <tr> <th></th> <th style="text-align: right;"><b>£’000</b></th> </tr> </thead> <tbody> <tr> <td>Cash and cash equivalents</td> <td style="text-align: right;">108,803</td> </tr> <tr> <td>Term deposits</td> <td style="text-align: right;">16,150</td> </tr> <tr> <td>Loans to customers</td> <td></td> </tr> <tr> <td>    At amortised cost</td> <td style="text-align: right;">244,840</td> </tr> <tr> <td>    Designated at fair value through profit or loss</td> <td style="text-align: right;">88,021</td> </tr> <tr> <td>Derivative financial instruments</td> <td></td> </tr> <tr> <td>    House price option</td> <td style="text-align: right;">6,662</td> </tr> <tr> <td>    Derivatives held for risk management</td> <td style="text-align: right;">970</td> </tr> <tr> <td>Fair value adjustment for portfolio hedged risk</td> <td style="text-align: right;">1,125</td> </tr> <tr> <td>Trade and other receivables</td> <td style="text-align: right;">3,394</td> </tr> <tr> <td>Prepayments</td> <td style="text-align: right;">199</td> </tr> </tbody> </table>	<b>Assets</b>	<b>30 September 2016</b>		<b>£’000</b>	Cash and cash equivalents	108,803	Term deposits	16,150	Loans to customers		At amortised cost	244,840	Designated at fair value through profit or loss	88,021	Derivative financial instruments		House price option	6,662	Derivatives held for risk management	970	Fair value adjustment for portfolio hedged risk	1,125	Trade and other receivables	3,394	Prepayments	199
<b>Assets</b>	<b>30 September 2016</b>																											
	<b>£’000</b>																											
Cash and cash equivalents	108,803																											
Term deposits	16,150																											
Loans to customers																												
At amortised cost	244,840																											
Designated at fair value through profit or loss	88,021																											
Derivative financial instruments																												
House price option	6,662																											
Derivatives held for risk management	970																											
Fair value adjustment for portfolio hedged risk	1,125																											
Trade and other receivables	3,394																											
Prepayments	199																											

Other receivables	2,426
Deferred tax asset	5,759
Property and equipment	163
Intangible assets	645
<b>Total assets</b>	<b>479,157</b>
<b>Liabilities</b>	
Trade and other payables	2,426
Derivatives held for risk management	2,258
Fair value adjustment for portfolio hedged risk	101
Financial liabilities at amortised cost	410,614
Financial liabilities at fair value through profit or loss	27,210
<b>Total liabilities</b>	<b>442,609</b>
<b>Equity</b>	
Share capital	6,478
Share premium	45,540
Retained earnings	(15,569)
Non-controlling interests	99
<b>Total equity</b>	<b>36,548</b>
<b>Total equity and liabilities</b>	<b>479,157</b>

The table below sets out summary key information extracted from the audited consolidated financial statements of Castle Trust for the period 1 October 2016 to 30 September 2017:

	Group 2017	Restated Group 2016
<b>Assets</b>	<b>£'000</b>	<b>£'000</b>
Cash and cash equivalents	127,324	107,403
Loans and advances to credit institutions	15,800	17,550
Trade and other receivables	4,669	6,808
Loans to customers		
At amortised cost	444,568	244,840
Designated at fair value through profit or loss	76,394	88,021
Fair value hedge asset	570	1,125
Derivative financial instruments		
House price option	12,153	6,662
Derivatives held for risk management	324	970
Prepayments	341	199
Deferred tax asset	5,869	5,759
Property and equipment	477	163
Investment in subsidiaries	-	-
Intangible assets	11,763	645
<b>Total assets</b>	<b>700,252</b>	<b>480,145</b>

<b>Liabilities</b>		
Trade and other payables	7,195	2,426
Provisions for liabilities	421	-
Derivatives held for risk management	1,177	2,258
Fair value hedge liability	-	101
Amounts due to customers for Fortress Bonds	605,007	411,602
Amounts due to group companies for BLA/ MILA	-	-
Financial liabilities at fair value through profit or loss	27,614	27,210
Amounts due to related parties under inter-company swap arrangements	-	-
<b>Total liabilities</b>	<b>641,414</b>	<b>443,597</b>
<b>Equity</b>		
Share capital	9,526	6,478
Share premium	72,971	45,540
Retained earnings	(23,713)	(15,569)
<b>Issued capital and reserves attributable to owners of the parent</b>	<b>58,784</b>	<b>36,449</b>
Non-controlling interests	54	99
<b>Total equity</b>	<b>58,838</b>	<b>36,548</b>
<b>Total equity and liabilities</b>	<b>700,252</b>	<b>480,145</b>
<p>The prior year comparatives have been restated to 1) recognise liabilities in respect of Fortress bonds (meaning a Fixed Rate Note or Floating Rate Note (as the case may be) that has been sold by Castle Trust or CTCM to an Investor) ("<b>Fortress Bonds</b>") subscribed to prior to year end for which cash was yet to be received from investors together with the corresponding intercompany receivable and 2) reclassify a component of cash and cash equivalents to loans and advances to credit institutions. Further detail is provided in notes 8, 9, 14 and 22 in the audited consolidated financial statements of Castle Trust for the period 1 October 2016 to 30 September 2017 (incorporated by reference).</p> <p>The table below sets out summary key information extracted from the interim consolidated financial statements of Castle Trust for the period 1 October 2017 to 31 March 2018:</p>		
		<b>Group</b>
		<b>31 March 2018</b>
<b>Assets</b>		<b>£'000</b>
Cash and cash equivalents		<b>62,254</b>
Loans and advances to credit institutions		<b>14,975</b>
Trade and other receivables		<b>2,903</b>
Loans to customers		
At amortised cost		<b>575,927</b>
Designated at fair value through profit or loss		<b>68,507</b>
Fair value hedge asset		<b>429</b>
Derivative financial instruments		



House price option	8,491
Derivatives held for risk management	203
Prepayments	454
Deferred tax asset	4,621
Property and equipment	643
Intangible assets	11,573
<b>Total assets</b>	<b>750,980</b>
<b>Liabilities</b>	
Trade and other payables	5,324
Provisions for liabilities	427
Derivatives held for risk management	3
Amounts due to customers for Fortress Bonds	657,262
Financial liabilities at fair value through profit or loss	23,671
<b>Total liabilities</b>	<b>686,687</b>
<b>Equity</b>	
Share capital	11,126
Share premium	87,371
Retained earnings	(34,238)
Non-controlling interests	34
<b>Total equity</b>	<b>64,293</b>
<b>Total equity and liabilities</b>	<b>750,980</b>

The table below sets out summary key information extracted from the audited consolidated financial statements of CTF for the period 1 October 2015 to 30 September 2016:

	30 September 2016
<b>Assets</b>	<b>£'000</b>
Loans and advances to customers	137,859
Fair value hedge asset	1,944
Trade and other receivables	-
Cash and cash equivalents	-
<b>Total assets</b>	<b>139,803</b>
<b>Liabilities</b>	
Amounts due to group companies	132,819
Derivatives held for risk management	2,258
<b>Total liabilities</b>	<b>135,077</b>
<b>Equity</b>	
Share capital	420
Share premium	3,780
Retained earnings	526
<b>Total equity</b>	<b>4,726</b>
<b>Total equity and liabilities</b>	<b>139,803</b>

The table below sets out summary key information extracted from the audited consolidated financial statements of CTF for the period 1 October 2016 to 30 September 2017:

	30 September 2017
<b>Assets</b>	<b>£'000</b>
Loans and advances to customers	116,235
Fair value hedge asset	667
Trade and other receivables	7,407
Cash and cash equivalents	1
<b>Total assets</b>	<b>124,309</b>
<b>Liabilities</b>	
Amounts due to group companies	118,214
Derivatives held for risk management	1,177
<b>Total liabilities</b>	<b>119,390</b>
<b>Equity</b>	
Share capital	420
Share premium	3,780
Retained earnings	719
<b>Total equity</b>	<b>4,919</b>
<b>Total equity and liabilities</b>	<b>124,309</b>

The table below sets out summary key information extracted from the interim financial statements of CTF for the period 1 October 2017 to 31 March 2018:

	31 March 2018
<b>Assets</b>	<b>£'000</b>
Loans and advances to customers	137,145
Fair value hedge asset	548
Trade and other receivables	2,842
Cash and cash equivalents	4,815
<b>Total assets</b>	<b>145,350</b>
<b>Liabilities</b>	
Amounts due to group companies	141,194
Derivatives held for risk management	-
Trade and other payables	254
<b>Total liabilities</b>	<b>141,448</b>
<b>Equity</b>	
Share capital	520
Share premium	4,680
Retained earnings	(1,298)
<b>Total equity</b>	<b>3,902</b>
<b>Total equity and liabilities</b>	<b>145,350</b>

The table below sets out summary key information extracted from the audited consolidated financial statements of CTT for the period 31 October 2016 to 30 September 2017:

	30 September 2017
	£'000
<b>Assets</b>	
Cash and cash equivalents	86,147
Loans and advances to credit institutions	14,900
Other receivables	31
Amounts due from group companies	501,370
<b>Total assets</b>	<b>602,448</b>
<b>Liabilities</b>	
Trade and other creditors	
Amounts due to group companies	601,369
<b>Total liabilities</b>	<b>601,369</b>
<b>Equity</b>	
Share capital	150
Share premium	1,350
Retained earnings	(421)
<b>Total equity</b>	<b>1,079</b>
<b>Total equity and liabilities</b>	<b>602,448</b>

The table below sets out summary key information extracted from the interim financial statements of CTT for the period 1 October 2017 to 31 March 2018:

	31 March 2018
	£'000
<b>Assets</b>	
Cash and cash equivalents	44,221
Loans and advances to credit institutions	14,975
Other receivables	16
Derivatives held for risk management	203
Amounts due from group companies	591,698
<b>Total assets</b>	<b>651,113</b>
<b>Liabilities</b>	
Derivatives held for risk management	3
Amounts due to group companies	650,855
<b>Total liabilities</b>	<b>650,858</b>
<b>Equity</b>	
Share capital	200
Share premium	1,800
Retained earnings	(1,745)
<b>Total equity</b>	<b>255</b>
<b>Total equity and liabilities</b>	<b>651,113</b>

There has been no material adverse change in the prospects of Castle Trust since the date of its last published audited financial statements of 30 September 2017. There has been no significant change in the financial or

		trading position of Castle Trust since 31 March 2018. There has been no material adverse change in the prospects of CTF since the date of its last published audited financial statements of 30 September 2017. There has been no significant change in the financial or trading position of CTF since 31 March 2018. There has been no material adverse change in the prospects of CTT since the date of its last published audited financial statements of 30 September 2017. There has been no significant change in the financial or trading position of CTT since 31 March 2018.
<b>B.13</b>	<b>Recent events particular to Castle Trust, CTF and CTT which are materially relevant to the evaluation of Castle Trust's, CTF's or CTT's solvency</b>	Not applicable; there have been no recent events which are materially relevant to the evaluation of Castle Trust's, CTF's or CTT's solvency.
<b>B.14</b>	<b>Dependency of Castle Trust, CTF and CTT on other entities within the group</b>	<p>Castle Trust is a wholly-owned subsidiary of CTHJ which in turn is majority owned by J.C. Flowers Fund III, a subsidiary of the J.C. Flowers Group. Castle Trust's subsidiaries include: CTCM, the Issuer, CTF, CTT, CTPOS and OCRF.</p> <p>Castle Trust is not dependent upon other entities within the Group. CTF and CTT are special purpose vehicles and are dependent on Castle Trust and CTCM for various functions.</p>
<b>B.15</b>	<b>Description of Castle Trust's, CTF's and CTT's principal activities</b>	<p>Castle Trust offers Mortgages to borrowers in respect of UK property and, through its subsidiary, OCRF, point-of-sale finance ("<b>POS Loans</b>") to consumers wishing to purchase products from suppliers (OCRF's suppliers currently grouped into six sectors: training and education, medical, lifestyle and valuables, technology and appliances, sports and hobbies and home improvement). Castle Trust, acts as the principal borrower under the Borrower Loan Agreement (as defined below) and as the counterparty to investment products entered into by the Issuer and Castle Trust Growth Housa PC.</p> <p>CTF is a special purpose vehicle which purchases certain non-house price and tariff related cashflows in respect of equity loans, UK residential house price tracking mortgages or interest bearing mortgages advanced by Castle Trust and secured on UK property ("<b>Mortgages</b>") and lends the proceeds to Castle Trust under the facility agreement entered into on 3 July 2014 as amended on 29 June 2015 between CTF (as lender) and Castle Trust (as borrower) (the "<b>Intra Group Loan Agreement</b>").</p> <p>CTT is a special purpose vehicle that was incorporated to provide risk management services to the Group, including managing the Group's interest rate risk and liquidity risk. As part of the risk management services it provides to the Group, CTT borrows from the Issuer under the Borrower Loan Agreement in order to provide term funding to certain members of the Group so that Group companies can in turn fund their respective lending activities and/or working capital requirements. This process centralises interest rate and liquidity risks in CTT. CTT lends money to Group companies under the terms of the facility agreement entered into on 28 April 2017 between certain members of the Group for the purpose of providing a contractual framework for the provision of loans between Group companies (the "<b>Master Intragroup Loan Agreement</b>").</p>
<b>B.16</b>	<b>Owner/ controller of Castle Trust, CTF and CTT</b>	CTF and CTT are directly wholly owned and controlled by Castle Trust. CTF, CTT and Castle Trust are each indirectly ultimately owned and controlled by James Christopher Flowers.

B.17	<b>Ratings assigned to the Issuer or its debt securities or to Castle Trust</b>	Not applicable: neither the Issuer nor Castle Trust is rated and Notes issued by the Issuer will not be rated.
B.20	<b>Special purpose vehicle; entity status</b>	The Issuer was incorporated as a special purpose vehicle for the purpose of issuing the Notes, being securities backed by the facility agreement dated 3 July 2014 between the Issuer (as lender) and Castle Trust (as borrower), which was amended on 29 June 2015 to document CTF's accession to the facility agreement as an additional borrower, and which was amended on 28 April 2017 to document CTT's accession to the facility agreement as an additional borrower, pursuant to which the Issuer makes advances to Castle Trust and/or CTT, as required, using the proceeds of issuance of each series of Notes (each, an " <b>Advance</b> ") (the " <b>Borrower Loan Agreement</b> ").
B.21	<b>Description of principal activities and overview of parties to the programme</b>	<p>The Issuer's objective is to provide a return to Investors in each series of Notes (each a "<b>Series</b>") comprising interest on the interest payment date(s) (each an "<b>Interest Payment Date</b>") and/or on the maturity date (each a "<b>Maturity Date</b>") for the relevant Series.</p> <p>To generate the amounts necessary to pay interest on ("<b>Interest</b>"), and to pay the amount payable on the relevant Maturity Date (the "<b>Final Redemption Amount</b>") of, the Notes, the Issuer entered into the Borrower Loan Agreement with Castle Trust (in its capacity as the principal borrower, the "<b>Principal Borrower</b>") on 3 July 2014, which was amended on 29 June 2015 to document CTF's accession to the Borrower Loan Agreement (the "<b>First Additional Borrower</b>") in connection with the purchase (and expected further purchases) from the Principal Borrower of a portfolio of Mortgage cashflows and consequential increases in the First Additional Borrower's liabilities under the Borrower Loan Agreement. The Borrower Loan Agreement was further amended on 28 April 2017 to document CTT's accession to the Borrower Loan Agreement (CTT in its capacity as an additional borrower, the "<b>Second Additional Borrower</b>" and, together with the Principal Borrower and the First Additional Borrower, the "<b>Borrowers</b>").</p> <p>As part of the risk management services it provides to the Group, CTT borrows from the Issuer under the Borrower Loan Agreement in order to provide term funding to certain members of the Group under the Master Intragroup Loan Agreement so that Group companies can in turn fund their respective lending activities and/or working capital requirements. Unlike the First Additional Borrower, the Second Additional Borrower borrows directly from the Issuer rather than assuming the Principal Borrower's liabilities under the Borrower Loan Agreement in exchange for Mortgage cashflows. Under the Borrower Loan Agreement, the issue proceeds received by the Issuer for subscription for each Series (net of its costs) are advanced to Castle Trust and/or CTT, as required. The Borrowers will pay interest on each Advance on (or immediately prior) to the Interest Payment Date(s) (if any) of the relevant Series and/or the Maturity Date of the relevant Series and will repay the principal amount of each Advance on the Maturity Date.</p> <p>The only business of the Issuer is the issue of Notes and the investment of the net proceeds in the Borrower Loan Agreement to generate the Interest and the Final Redemption Amount.</p> <p>Fortress Bonds are available for a minimum investment of £1,000 and provide returns for those who seek a competitive return on their capital or who wish to diversify their existing low risk investment portfolios. Fortress Bonds qualify for inclusion in SIPPs and ISAs.</p> <p>The Financial Services Compensation Scheme ("<b>FSCS</b>") can pay compensation to investors if an investment firm (such as Castle Trust) is unable to meet its financial obligations of up to £50,000 per eligible claimant (as opposed to bank deposits where the limit is, as at the date of this document, £85,000). If an Investor has suffered a loss as a result of Castle Trust failing to meet its financial obligations (for example, if it failed to buy</p>

		<p>back Fortress Bonds because it had become insolvent) then the Investor would be able to seek compensation from the FSCS, provided the Investor is an eligible claimant.</p> <p>Castle Trust is a regulated investment firm operating in the UK. Castle Trust, which was incorporated in England in 2010, operates predominantly from its head office in London and had 209 permanent employees as at 30 September 2017. Castle Trust provides a range of mortgages, including equity loans, UK residential house price index tracking mortgages and interest bearing mortgages secured on UK property ("<b>Mortgages</b>"). Castle Trust also provides POS Loans through its wholly-owned subsidiary, OCRF. When providing Mortgages or POS Loans, Castle Trust seeks to match the property and interest exposure of its Mortgages or POS Loans, as the case may be, with the repayment obligations under Castle Trust's funding liabilities.</p> <p>Liquid assets: Castle Trust targets a minimum of 10% of the amount invested by an Investor, being the number of Notes purchased multiplied by the issue price for the relevant Series (the "<b>Investment Amount</b>"), (up to a maximum of the total subscription proceeds not issued as either Mortgages or POS Loans) to be invested by Castle Trust into liquid assets with a maturity of less than two years. This is intended to ensure that Castle Trust has sufficient liquid reserves in order to fund the Interest and Final Redemption Amount payments due pursuant to the Borrower Loan Agreement. As at 30 September 2017, Castle Trust held around £143,124,000 of liquid assets. Castle Trust uses the advances under the Borrower Loan Agreement to fund its Mortgage business. As at 30 September 2017, CTT has made borrowings under the Borrower Loan Agreement in relation to subscriptions of £605,007,000 for Fortress Bonds (this figure reflecting Castle Trust's consolidated financial position).</p> <p>Castle Trust is the immediate parent of the Issuer.</p> <p>The Issuer has appointed CTCM as its calculation agent, nominee for holders of the Notes and marketing manager in respect of the Notes. CTCM is a sister company of the Issuer. The Issuer has appointed JTC (Jersey) Limited, who is unconnected to the Issuer, as registrar of the Notes. The Issuer has appointed JTC (Trustees) UK Limited, who is unconnected to the Issuer, as "<b>Trustee</b>" (which expression includes all persons for the time being trustee or trustees appointed under the trust deed dated on or after the date of this Base Prospectus (as amended or supplemented from time to time, including 24 June 2015 and 13 June 2017)) between the Issuer and the Trustee (the "<b>Trust Deed</b>").</p>
<b>B.22</b>	<b>Statement regarding lack of operations/ financial statements since incorporation</b>	Not applicable. The Issuer commenced operations on 9 July 2014. The Issuer published audited financial statements for the period ended 30 September 2017.

**B.23** Historical key financial information regarding the issuer

The table below sets out summary key information extracted from the audited financial statements of the Issuer for the period 1 October 2015 to 30 September 2016:

	30 September 2016
<b>Assets</b>	£
Loans and receivables	408,737,659
Trade and other receivables	9,271,183
<b>Total assets</b>	418,008,842
<b>Equity</b>	
Called up share capital	50,000
Share premium	450,000
Retained earnings	-
<b>Total equity</b>	500,000
<b>Liabilities</b>	
Financial liabilities at amortised cost	408,737,659
Trade and other payables	8,771,183
<b>Total liabilities</b>	417,508,842
<b>Total equity and liabilities</b>	418,008,842

The table below sets out summary key information extracted from the audited financial statements of the Issuer for the period 1 October 2016 to 30 September 2017:

	2017	Restated 2016
	£'000	£'000
<b>Assets</b>		
Loans and advances to group companies	600,120	409,726
Amounts due from group companies	1,749	9,271
<b>Total assets</b>	601,869	418,997
<b>Liabilities</b>		
Amounts due to customers	600,120	409,726
Amounts due to group companies	1,249	8,771
<b>Total liabilities</b>	601,369	418,497
<b>Equity</b>		
Called up share capital	50	50
Share premium	450	450
Retained earnings	-	-
<b>Total equity</b>	500	500
<b>Total equity and liabilities</b>	601,869	418,997

The prior year comparatives have been restated to recognise liabilities in respect of Fortress Bonds subscribed to prior to year end for which cash was yet to be received from investors together with the corresponding intercompany receivable. Further detail is provided in notes 5 and 8 the audited financial statements of the Issuer for the period 1 October 2016 to 30 September 2017 (incorporated by reference).

		<p>The table below sets out summary key information extracted from the interim financial statements of the Issuer for the period 1 October 2017 to 31 March 2018:</p> <table border="1"> <thead> <tr> <th></th> <th style="text-align: right;">31 March 2018</th> </tr> <tr> <th></th> <th style="text-align: right;">£'000</th> </tr> </thead> <tbody> <tr> <td colspan="2"><b>Assets</b></td> </tr> <tr> <td>Loans and advances to group companies</td> <td style="text-align: right;">650,316</td> </tr> <tr> <td>Amounts due from group companies</td> <td style="text-align: right;">1,039</td> </tr> <tr> <td><b>Total assets</b></td> <td style="text-align: right;"><b>651,355</b></td> </tr> <tr> <td colspan="2"><b>Liabilities</b></td> </tr> <tr> <td>Amounts due to customers</td> <td style="text-align: right;">650,316</td> </tr> <tr> <td>Amounts due to group companies</td> <td style="text-align: right;">539</td> </tr> <tr> <td><b>Total liabilities</b></td> <td style="text-align: right;"><b>650,855</b></td> </tr> <tr> <td colspan="2"><b>Equity</b></td> </tr> <tr> <td>Called up share capital</td> <td style="text-align: right;">50</td> </tr> <tr> <td>Share premium</td> <td style="text-align: right;">450</td> </tr> <tr> <td>Retained earnings</td> <td style="text-align: right;">-</td> </tr> <tr> <td><b>Total equity</b></td> <td style="text-align: right;"><b>500</b></td> </tr> <tr> <td><b>Total equity and liabilities</b></td> <td style="text-align: right;"><b>651,355</b></td> </tr> </tbody> </table> <p>As at the date of this document, there has been no significant change to the financial position of the Issuer during the period covered by the financial information above or since 31 March 2018.</p>		31 March 2018		£'000	<b>Assets</b>		Loans and advances to group companies	650,316	Amounts due from group companies	1,039	<b>Total assets</b>	<b>651,355</b>	<b>Liabilities</b>		Amounts due to customers	650,316	Amounts due to group companies	539	<b>Total liabilities</b>	<b>650,855</b>	<b>Equity</b>		Called up share capital	50	Share premium	450	Retained earnings	-	<b>Total equity</b>	<b>500</b>	<b>Total equity and liabilities</b>	<b>651,355</b>
	31 March 2018																																	
	£'000																																	
<b>Assets</b>																																		
Loans and advances to group companies	650,316																																	
Amounts due from group companies	1,039																																	
<b>Total assets</b>	<b>651,355</b>																																	
<b>Liabilities</b>																																		
Amounts due to customers	650,316																																	
Amounts due to group companies	539																																	
<b>Total liabilities</b>	<b>650,855</b>																																	
<b>Equity</b>																																		
Called up share capital	50																																	
Share premium	450																																	
Retained earnings	-																																	
<b>Total equity</b>	<b>500</b>																																	
<b>Total equity and liabilities</b>	<b>651,355</b>																																	
<b>B.24</b>	<b>Material adverse changes</b>	As of the date of this document, there has been no material adverse change in the prospects of the Issuer since the date of its last published audited financial statements for the period 1 October 2016 to 30 September 2017.																																
<b>B.25</b>	<b>Description of underlying assets</b>	<p><b>The Borrower Loan Agreement</b></p> <p>The Issuer entered into the Borrower Loan Agreement with Castle Trust on 3 July 2014, which was amended on 29 June 2015 to document CTF's accession to the Borrower Loan Agreement as an additional borrower and then further amended on 28 April 2017 to document CTT's accession to the Borrower Loan Agreement as an additional borrower. Under the Borrower Loan Agreement the Issuer pays the amount raised from the issue of the Notes (less certain costs payable by the Issuer) to Castle Trust and/or CTT, as required. In return, the Borrowers agree to pay to the Issuer an amount not less than the Interest and the Final Redemption Amount as the Notes mature.</p> <p>The Borrower Loan Agreement has the characteristics that demonstrate capacity to produce the funds required to service the payments due and payable on the Notes. However, the Interest and Final Redemption Amount payable to the Investors is dependent on the Borrowers' ability to meet their payment obligations under the Borrower Loan Agreement and the relevant Advance. The Borrowers do not provide any security to the Issuer to meet their obligations under the Borrower Loan Agreement.</p> <p>CTF meets its obligations under the Borrower Loan Agreement to pay the Interest and the Final Redemption Amount by purchasing Mortgage cashflows from Castle Trust and using the income from these Mortgage cashflows to service its payment obligations. Payments due on these Mortgage cashflows are left outstanding pursuant to the Intra Group Loan Agreement with Castle Trust making funds available when CTF requires these to make payments pursuant to the Borrower Loan Agreement. Castle Trust meets its repayment obligations under the Borrower Loan Agreement to pay the Interest and the Final Redemption Amount by providing Mortgages</p>																																

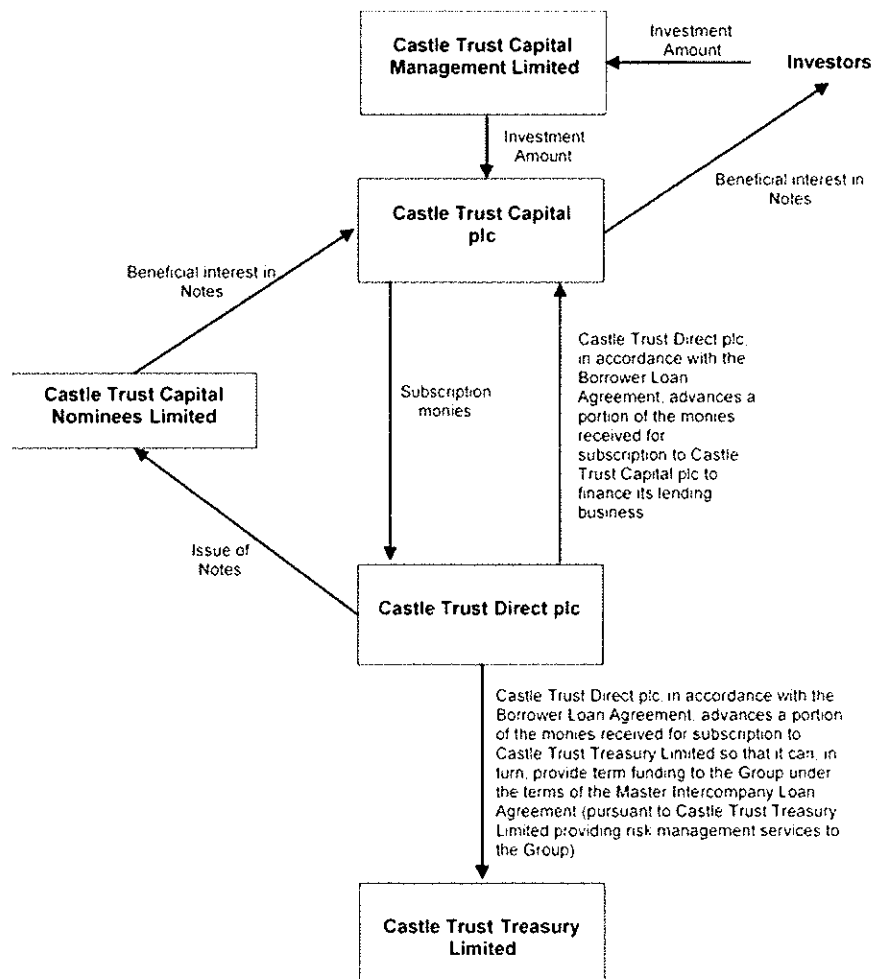


		<p>secured on UK property and investing in liquid assets. CTT meets its obligations under the Borrower Loan Agreement to pay the Interest and the Final Redemption Amount by using the income from the intercompany term loans it makes to certain Group companies under the Master Intragroup Loan Agreement to service its repayment obligations.</p> <p><b>Castle Trust's business</b></p> <p>Castle Trust's business model is based on (i) the provision of loans to the owners and developers of UK residential property secured by a mortgage, and (ii) through its subsidiary OCRF, the provision of loans to UK consumers in order to finance, in full or in part, the purchase of certain products from certain suppliers who partner with OCRF. Castle Trust generates its margins on Mortgages through the accrual and/or regular payment of interest or, instead of collecting interest, by participating (on the basis of a pre-defined formula) in any rise in the value of the property upon which its Mortgages are secured. In some cases Castle Trust's returns are based on the movements of an Index rather than upon the value of the individual mortgaged property. Castle Trust Mortgages may, in some cases, include both house price linked and interest accruing features. Castle Trust generates its margins on POS Loans through the commission charged to the supplier on the products financed and/or the regular payment of interest.</p> <p>Each Mortgage represents a portion (typically, between 10% and 50%) of the value of each individual property. The individual, granular exposures are pooled to achieve broad diversification. The element of exposure from Castle Trust's Mortgages and POS Loans to house price movements which Castle Trust assumes through some of its Mortgages is offered to investors or counterparties who seek exposure to UK housing returns (including through Castle Trust's Housa investments). The element of exposure to UK interest rates which Castle Trust assumes through its Mortgages and POS Loans is offered to investors through the issue of Fortress Bonds.</p> <p><b>Liquid assets</b></p> <p>Castle Trust targets a minimum of 10% of the Investment Amount paid by Investors for their Notes (up to a maximum of the total subscription proceeds not issued as Mortgages) to be invested by Castle Trust and/or CTT into assets such as cash at bank, senior bank debt, externally managed liquidity funds, securities issued by the UK government and other high quality liquid assets (all with a maturity of less than or equal to two years). This is intended to ensure that Castle Trust and CTT have sufficient liquid reserves in order to fund the Interest and Final Redemption Amount payments due pursuant to the Borrower Loan Agreement. Investors do not have any rights over the mortgages or loans provided by Castle Trust nor the liquid assets it holds from time to time.</p>
B.26	<b>Details of actively managed pool of assets</b>	Not applicable; there is not an actively managed pool of assets backing the Notes.
B.27	<b>Statement if further securities backed by same assets</b>	There is not a separate identifiable pool of Mortgages or POS Loans backing each Advance under the Borrower Loan Agreement. Accordingly, the Issuer proposes to issue Notes and further Notes backed by the same assets, which will be announced to the market (including holders of the Notes) by the Issuer.
B.28	<b>Transaction structure</b>	<p>All Notes are first issued to Castle Trust on their respective issue dates and are then admitted to trading on the regulated market of Euronext Dublin on the same business day.</p> <p>Castle Trust sells the Notes to Investors who make valid applications during the offer period(s) for the relevant Series (the "Offer Period"). Castle Trust uses the sums received from Investors to discharge the outstanding inter-company loan created when the Notes are issued. Any Notes which are not sold during the Offer Period are redeemed. The Issuer advances all</p>

subscription monies for Notes (less certain fees payable to CTCM) to Castle Trust and/or CTT, as required, under the Borrower Loan Agreement. Castle Trust and CTT will pay interest to the Issuer on each Advance on (or immediately prior to) the Interest Payment Date(s) (if any) and/or the Maturity Date of the relevant Series.

On the Maturity Date for each Series, the Advance made by the Issuer to Castle Trust or CTT in relation to that Series will mature and the Borrowers will pay the Issuer a sum not less than the Final Redemption Amount and any Interest due on the Maturity Date so that the Issuer may pay these sums to the relevant Investors and the Notes of such Series will be redeemed in full.

The terms and conditions under which Investors purchase Notes from Castle Trust contain an obligation on Castle Trust to buy back the Notes held by Investors. This states that Castle Trust agrees to purchase the Notes held by that Investor on the Maturity Date if they have not been redeemed by the Issuer (as intended) by 14.00 on that day for an amount equal to the Final Redemption Amount and any Interest due but unpaid on the Notes. The structure is illustrated in the following diagrams:



		<p>The diagram illustrates the flow of funds between several entities:</p> <ul style="list-style-type: none"> <li><b>Borrowers</b> provide "All cashflows (made up of (i) house price and tariff related cashflows, and (ii) fixed interest payment cashflows)" to <b>Castle Trust Capital plc</b>.</li> <li><b>Castle Trust Capital plc</b> provides "Fixed interest payment cash flows immediately lent under the Inter Company Loan Agreement" to <b>Castle Trust Finance Limited</b>.</li> <li><b>Castle Trust Finance Limited</b> provides "Fixed interest payment cash flows*" to <b>Castle Trust Direct plc</b>.</li> <li><b>Castle Trust Capital plc</b> provides "Repayment under the Inter Company Loan Agreement equal to Castle Trust Finance Limited's payment obligations under the Borrower Loan Agreement" to <b>Castle Trust Finance Limited</b>.</li> <li><b>Castle Trust Capital plc</b> provides "Provides term funding under the Master Intragroup Loan Agreement" to <b>Castle Trust Treasury Limited</b>.</li> <li><b>Castle Trust Treasury Limited</b> provides "Repayment under the Master Intragroup Loan Agreement" to <b>Castle Trust Capital plc</b>.</li> <li><b>Castle Trust Capital plc</b> provides "Repayment under the Borrower Loan Agreement" to <b>Castle Trust Direct plc</b>.</li> <li><b>Castle Trust Finance Limited</b> provides "Payment under the Borrower Loan Agreement (liabilities assumed from Castle Trust Capital plc)" to <b>Castle Trust Direct plc</b>.</li> <li><b>Castle Trust Treasury Limited</b> provides "Repayment under the Borrower Loan Agreement" to <b>Castle Trust Direct plc</b>.</li> <li><b>Castle Trust Direct plc</b> provides "Repayment under the Borrower Loan Agreement" to <b>Investors</b>.</li> <li><b>Castle Trust Direct plc</b> has a "Legal obligation to make interest payment(s) and capital repayments" to <b>Investors</b>.</li> <li><b>Castle Trust Direct plc</b> provides "Interest payment(s) and capital repayments made by CTC to Investors at the direction of CTC" to <b>Investors</b>.</li> </ul> <p>* The fixed interest payment cashflows are split from the house price and tariff related cashflows as a result of Castle Trust Capital plc selling the fixed interest payment cashflows to Castle Trust Finance Limited in exchange for Castle Trust Finance Limited assuming Castle Trust Capital plc's payment obligations to Castle Trust Direct plc under the Borrower Loan agreement.</p>
<p><b>B.29</b></p>	<p><b>Flow of funds</b></p>	<p>The Notes are issued to Castle Trust and the subscription amount is left outstanding on inter-company account.</p> <p>Castle Trust sells the Notes to Investors who make valid applications during the Offer Period. Castle Trust pays the sums received from the sale of the Notes to the Issuer to discharge the outstanding intercompany loan created when the Notes are issued to Castle Trust. Notes which are not sold to Investors during the Offer Period are redeemed.</p> <p>The Issuer advances all subscription monies received from Castle Trust (less certain costs payable by the Issuer) to Castle Trust and/or CTT, as required, under the Borrower Loan Agreement. The Issuer offsets its liability to pay the subscription monies to Castle Trust and/or CTT, as applicable, under the Borrower Loan Agreement against Castle Trust's liability to satisfy the intercompany debt for the subscription amount for the Notes. This reduces the number of money flows required.</p> <p>Interest is payable on the Notes at the times specified as Interest Payment Dates (if any), and/or the Maturity Date set out, in the applicable Final Terms. Interest is funded by the Borrowers' obligations under the Borrower Loan Agreement. Castle Trust targets a minimum of 10% of the Investment Amount paid by Investors for their Notes (up to a maximum of the total subscription proceeds not issued as Mortgages or POS Loans) to be invested by Castle Trust and/or CTT into liquid assets meaning Castle Trust and CTT should have sufficient liquid reserves in order to fund the Final Redemption Amount payments due.</p> <p>Payment of the Final Redemption Amount shall be made by the Issuer to Investors within three Business Days of the Maturity Date or, if the repayment of the Advance under the Borrower Loan Agreement to which the Notes relate is delayed, within three Business Days of such later date on which the amount of each repayment is actually received by the Issuer in cleared monies.</p>
<p><b>B.30</b></p>	<p><b>Name/description of originators of securitised assets</b></p>	<p>The only assets of the Issuer are the Borrowers' obligations under the Borrower Loan Agreement. Castle Trust is the principal borrower under the Borrower Loan Agreement and provides Mortgages to its customers. CTF is</p>

		an additional borrower under the Borrower Loan Agreement and meets its payment obligations by purchasing Mortgage cashflows from Castle Trust. CTT is an additional borrower under the Borrower Loan Agreement and meets its payment obligations by using the income it receives from loans it has made to Group companies under the Master Intragroup Loan Agreement. The business address of each of Castle Trust, CTF and CTT is: Tower 42, 25 Old Broad Street, London EC2N 1HQ.
--	--	--

<b>Section C – Securities</b>		
<b>C.1</b>	<b>Type and class of securities</b>	<p>Series: 2 Year (Income) November 2018 ISA Notes</p> <p>Series Number: 387</p> <p>Aggregate Nominal Amount of the Series: £5,000,000</p> <p>Registered Notes: Global Certificate exchangeable for Individual Certificate only upon request to hold legal title to Notes</p> <p>ISIN Code: GB00BFKMB635</p> <p>Offer Period: 31 October 2018 – 30 November 2018</p> <p>Maturity Date: 1 December 2020 (subject to any extension)</p>
<b>C.2</b>	<b>Currency of securities</b>	Sterling
<b>C.5</b>	<b>Restrictions on free transferability of securities</b>	<p>In relation to the United States, Notes are sold and offered outside the United States to non-U.S. persons in reliance on the exemption from registration provided by Regulation S under the United States Securities Act of 1933, as amended. Selling restrictions also apply to offers, sales or transfers of the Notes under the applicable laws in various other jurisdictions.</p> <p>The minimum denomination of each Note will be £1.00.</p> <p>Subject to the above, the Notes will be freely transferable.</p>
<b>C.8</b>	<b>Rights attached to securities including ranking and limitations on those rights</b>	<p><b>Ranking</b></p> <p>The Notes are direct, unconditional, senior, unsubordinated and unsecured obligations of the Issuer that rank <i>pari passu</i> among themselves and (save for certain obligations required to be preferred by law) equally with all other unsecured, unsubordinated obligations of the Issuer.</p> <p><b>Negative pledge</b></p> <p>The Notes do not have the benefit of a negative pledge.</p> <p><b>Withholding tax</b></p> <p>All payments of principal and interest in respect of the Notes are made free and clear of withholding taxes of the United Kingdom, unless the withholding is required by law.</p> <p>In the event that any such deduction is required, neither the Issuer nor, as the case may be, Castle Trust will be required to pay any additional amounts to cover the amounts so deducted.</p> <p><b>Events of Default</b></p> <p>The Notes do not have the benefit of events of default.</p> <p><b>Meetings and modification</b></p> <p>Meetings of Noteholders may be called by the Issuer or by Noteholders to consider matters relating to the Notes, including the modification of the Note Conditions. The Note Conditions may be modified by a resolution passed by</p>

		<p>at least three quarters of the votes cast at such a meeting. Any modification so approved will be binding on all Noteholders.</p> <p>The Trustee may modify or amend the Note Conditions without the consent of Noteholders if, in its opinion, such amendment is to correct a manifest error; of a formal, minor or technical nature; or is not materially prejudicial to the interests of the Noteholders.</p> <p><b>Notices</b></p> <p>Notices shall be sent to Noteholders at their address on the Register, and shall be deemed to have been given on the fourth weekday after the date of sending.</p> <p><b>Governing law</b></p> <p>English law.</p> <p><b>Enforcement of Notes in Global Form</b></p> <p>In the case of Notes held in the form of a Global Certificate, individual Investors' rights against the Issuer will be governed by a Trust Deed dated 3 July 2014 (as amended from time to time including 24 June 2015 and 13 June 2017), a copy of which will be available for inspection at the registered office of the Issuer or the Trustee.</p>
C.9	Interest/ Redemption	<p>Rate of Interest: 2.2342% per annum payable quarterly (as such rate may be: (i) increased by the Issuer (if at all and at its absolute discretion) during the Offer Period and notified to Noteholders prior to the end of such period); and (ii) amended (as part of any extension) to the rate notified by the Issuer to the Noteholders prior to the Election Period) in arrear.</p> <p>Interest Payment Date(s): Last calendar day of February, May, August and November in each year up to and including the Maturity Date.</p> <p>Fixed Coupon Amount(s): £5.5933 per Calculation Amount (as such rate may be: (i) increased to reflect an increase to the Rate of Interest by the Issuer (if at all and at its absolute discretion) during the Offer Period and notified to Noteholders prior to the end of such period); and (ii) amended (as part of any extension) to the amount notified by the Issuer to the Noteholders prior to the Election Period).</p> <p>Floating Rate Notes are not being issued pursuant to these Final Terms.</p> <p><b>Return on redemption at maturity</b></p> <p>Final Redemption Amount: Unless previously redeemed and cancelled, each Note will be redeemed at its Final Redemption Amount of 100 per cent.</p> <p><b>Redemption of Castle Trust-held Notes at the option of the Issuer</b></p> <p>Redemption at the option of the Issuer: the Issuer may redeem all of the Notes in which Castle Trust has an interest: (i) (save for such Notes which Castle Trust indicates it will transfer to Investors subject to receipt of cleared funds) on the day before the Interest Commencement Date of: 1 December 2018 at the Final Redemption Amount of 100 per cent.; (ii) where Castle Trust has failed to discharge the inter-company debt owed to the Issuer in consequence of the initial subscription for the Notes by the end of the day falling four Business Days after the Interest Commencement Date of: 1 December 2018 at the Issue Price of: £1.00; and (iii) at any time giving not less than 5 Business Days' notice to redeem at the Optional Redemption Amount of: 100 per cent.</p> <p><b>Optional redemption (early encashment):</b> Not applicable.</p> <p><b>Yield:</b> Based upon the Issue Price of 100% of the Aggregate Nominal Amount, at the Issue Date the anticipated yield of the Notes is 2.15% per annum.</p>

		<b>Trustee for the Noteholders:</b> JTC Trustees (UK) Limited (which expression includes all persons for the time being trustee or trustees appointed under the Trust Deed).
<b>C.10</b>	<b>Derivative components:</b>	Not applicable; there is no derivative component in the interest payments made in respect of Notes.
<b>C.11</b>	<b>Status of trading on regulated market</b>	The Issuer has applied for the Notes to be admitted to trading on the regulated market of Euronext Dublin which is a regulated market for the purposes of MiFID II
<b>C.12</b>	<b>Minimum denomination of Issue</b>	£1.00.

<b>Section D – Risks</b>		
<b>D.2</b>	<b>Key information on the key risks specific to the Issuer and Castle Trust</b>	<p>The key risks specific to the Issuer are:</p> <ul style="list-style-type: none"> <li>• the Issuer has no material assets save for the Borrowers' obligations under the Borrower Loan Agreement and therefore if the Borrowers fail to meet those obligations the Issuer will not be able to meet its obligations to Investors; and</li> <li>• the Issuer's only investments for each Series are in the relevant Advance under the Borrower Loan Agreement and there is no counterparty risk diversification.</li> </ul> <p>The key risks specific to Castle Trust, CTF and CTT as the "<b>Borrowers</b>" are:</p> <ul style="list-style-type: none"> <li>• Castle Trust, CTF and CTT are exposed to the risk of borrowers defaulting on their repayment obligations, and their overall financial performance depends to a certain extent on a number of macroeconomic factors outside the control of Castle Trust, CTF and CTT which impact on UK housing demand and demand for mortgage lending and consumer lending in general, including political, financial and economic conditions. Factors include gross domestic product growth, unemployment rates, consumer confidence, the availability and cost of credit, taxation, and regulatory changes. These factors could reduce the level of demand for Mortgages and adversely impact the ability of borrowers to satisfy their repayment obligations;</li> <li>• Mortgages and POS Loans that have been originated by Castle Trust are unlikely to be easily sold by Castle Trust. If the period of time for which borrowers hold Mortgages is longer than usual for the UK mortgage market, or the period of time for which borrowers hold POS Loans is longer than is usual for the UK point-of-sale finance market, then Castle Trust, CTF and CTT may be unable to meet their obligations under the Borrower Loan Agreement because insufficient Mortgages and POS Loans have been repaid;</li> <li>• Castle Trust operates in a regulated environment. Non-compliance by Castle Trust with applicable laws, regulations and codes relevant to the financial services industry would lead to fines, inability to enforce interest income accrued, public reprimands, damage to reputation, increased prudential requirements, enforced suspension of operation or, in extreme cases, withdrawal of authorisation to operate;</li> <li>• Castle Trust's future success depends to a significant degree upon the continued contribution of its key personnel, its ability to recruit, train, retain and motivate personnel, and to ensure that employment contract terms are appropriate;</li> <li>• Castle Trust is reliant on third party people, IT systems and architecture which are provided by and/or supported by third party vendors. A</li> </ul>

		<p>material systems failure could result in loss of key records, leading to financial loss and/or customer detriment; and</p> <ul style="list-style-type: none"> <li>Castle Trust has determined that, as its business has grown and evolved, Castle Trust would benefit from conversion to a bank. Accordingly Castle Trust is in dialogue with the Prudential Regulation Authority (PRA) and the Financial Conduct Authority (FCA) in order to pursue a banking licence application. If Castle Trust did not secure a banking licence for any reason, and it was unable to generate its own capital rapidly (in the form of retained earnings), nor raise equity for growth, as an investment firm, then it is likely that Castle Trust's assets and liabilities would grow at a much slower pace (if at all) and its prospects and profitability would be significantly diminished which could, in turn, adversely impact the Issuer's ability to fulfil its obligations under the Notes.</li> </ul>
<b>D.3</b>	<b>Key information on the key risks specific to the securities</b>	<p>The key risks specific to the Notes are:</p> <ul style="list-style-type: none"> <li>Investors' capital is at risk. Investors may lose up to the entire value of their investment in the Notes as a result of the occurrence of: <ul style="list-style-type: none"> <li>(a) the insolvency of the Issuer, CTF, CTT and/or Castle Trust; and</li> <li>(b) amounts payable being subject to deduction for tax and/or expense;</li> </ul> </li> <li>Investors will not be entitled to redeem any of their Notes prior to the Maturity Date. However, Investors may dispose of their Notes if a secondary market develops but there is no guarantee that such a market will develop (independently of Castle Trust) or whether it will be liquid or illiquid. The FSCS does not apply to Investors who acquire Notes on any such secondary market;</li> <li>The Borrower Loan Agreement is unsecured and none of CTF, CTT and Castle Trust provide collateral in respect of their obligations under the Borrower Loan Agreement. The Notes are therefore subject to the credit risk of CTF, CTT and Castle Trust;</li> <li>In the event that Castle Trust has insufficient reserves to repurchase all Notes maturing, qualifying Investors' only recourse will be to seek compensation from the FSCS (under which, at the date of this document, they may seek to recover up to £50,000 of losses, provided they are an eligible claimant); and</li> <li>Otherwise, in the event that CTF, CTT and Castle Trust have insufficient reserves to pay to the Issuer the Final Redemption Amount for, and any Interest due on, the Notes as they mature, all affected Investors would rank as ordinary unsecured creditors of the Issuer to the extent that the Issuer has insufficient funds to pay in full the Final Redemption Amount and/or any Interest due on their Notes.</li> </ul>

#### Section E – Offer

<b>E.2b</b>	<b>Reasons for offer; use of proceeds</b>	<p>The net proceeds from the issue of Notes are used by the Issuer to invest in the Advance for that Series under the Borrower Loan Agreement. This is in line with the investment objective to pay to Investors the Final Redemption Amount at the Maturity Date and to pay interest on the relevant Interest Payment Date(s) and/or the Maturity Date.</p> <p>Castle Trust uses the funds it receives from the Issuer under the Borrower Loan Agreement to lend Mortgages (with a target of a maximum of 90% of</p>
-------------	---	---

		such funds received) and also to invest in liquid assets (with a target of a minimum of 10% of such assets). Obligations under the Borrower Loan Agreement mean that Castle Trust, CTF and CTT must pay the Issuer an amount equal to the Final Redemption Amount as Notes mature and to pay interest on the relevant Interest Payment Date(s) and/or the Maturity Date.
<b>E.3</b>	<b>Description of terms and conditions of Offer</b>	<p>Offer Period: 31 October 2018 – 30 November 2018</p> <p>Amount of any expenses and taxes specifically charged to the Investor: Not Applicable</p> <p>Names and address of the entities which have a firm commitment to act as intermediaries in secondary trading, providing liquidity through bid and offer rates and description of the main terms of their commitment: Castle Trust Capital plc, 10 Norwich Street, London EC4A 1BD. See Parts X and XIX of the Base Prospectus.</p>
<b>E.4</b>	<b>Description of any Interests</b>	Save for certain fees payable to CTCM (equal to 2.5% per annum of Aggregate Nominal Amount of the Series) in connection with the issue of the Notes and the net amounts of the Notes advanced to Castle Trust under the Borrower Loan Agreement, no person involved in the issue of the Notes has an interest material to the offer.
<b>E.7</b>	<b>Estimated expenses charged to Investor</b>	<p>Investors who invest directly with Castle Trust are not subject to an initial charge.</p> <p>No other charges are levied on Investors by the Issuer, CTF or CTT.</p> <p>Investors may be subject to third party charges from financial intermediaries or service providers in relation to the Fortress Bonds.</p>